



# **Welcome to Easthampstead Park Community School**

# Transition aims



- Settle in well to secondary school life.
- Show an increased interest in school and learning.
- Develop an interest in new subjects and engage with our ethos of 'Respect and Pride'.
- Make new friendships.
- Get used to new routines and teachers.
- Take greater responsibility to be organised for school.

# Year 7 Team



**Head of Year - Miss Preston**

## **Tutors**

**7D1** - Mr J Sheldon, Teacher of PE

**7D2** - Mrs L Crallan, Teacher of Art

**7D3** - Miss A Greenshields, Teacher of Humanities

**7D4** - Mr D Carpenter, Teacher of MFL

**7D5** - Mrs T Randle, Teacher of Mathematics

**7D6** - Mr Lowe, Teacher of English, Media and Film



# Curriculum time for Year 7

- Divided into two schools - Discovery (Years 7 and 8) and Destiny ( Years 9 - 11).
- Students divided into X and Y halves. This is usually based on SATS results/Year 6 teacher feedback.
- We follow a two week timetable - Week A and B - if you get confused please refer to our website and calendar of events on the website.



# Timings of the school day



Roll Call	Warning bell at 8:35 Roll Call - 08:40 - 08:50
PREP (Plan, Review, Evaluate, Progress)	08:50 - 09:20
Period 1	09:20 - 10:30
<b>Break</b>	<b>10.30 - 11:00</b>
Period 2	11:00 - 12:10
Period 3	12:10 - 13:20
<b>Lunch</b>	<b>13:20 - 13:50</b>
Period 4	13:50 - 15:00
Afternoon registration	15:00 - 15:10



# PREP- Plan, Review, Evaluate, Progress

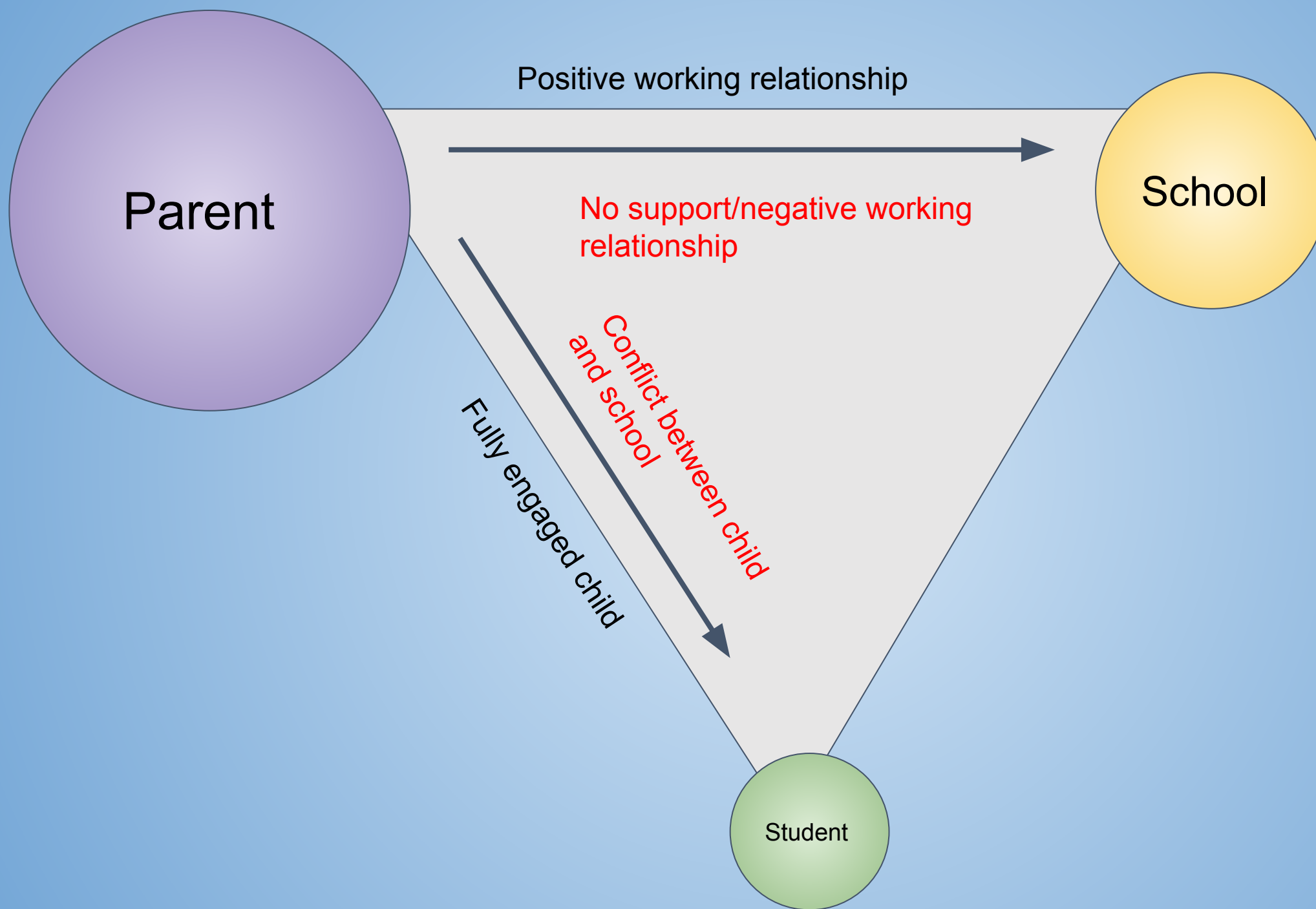


The PREP session in the morning is designed to help students to become more independent learners, to reflect on the learning that they have completed and to begin any homework that has been set.

**Guided Reading will be a focus during the first term.**

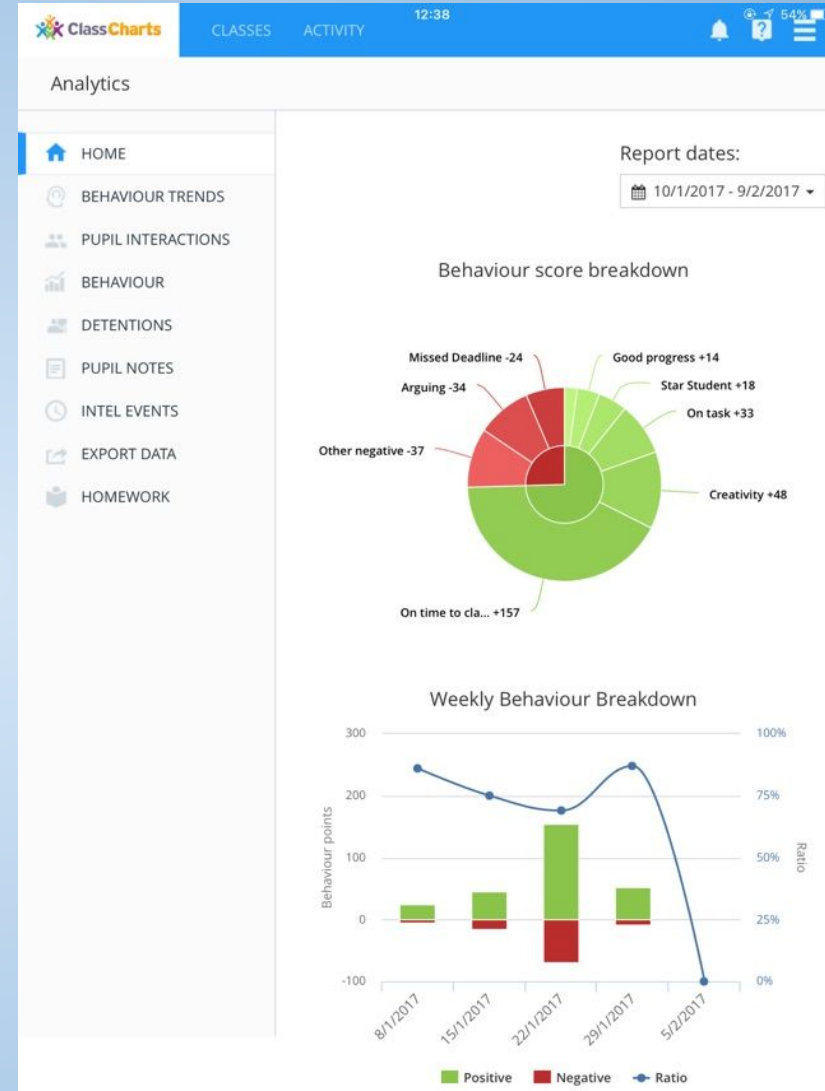
**Assembly also takes place during PREP.**





# CLASSCHARTS

- Allows you to monitor your child's behaviour.
- All homework is set via Classcharts.
- Detentions and homework support sessions are recorded in Classcharts.
- In real time.



**Log in codes will be issued to parents in September**



# Detentions



- We expect parents to support the school and that your child will attend the detention when set.
- Issued via Classcharts.
- The majority of students do not get detentions!
- The Classcharts app is used to set school detentions (please check this on a regular basis).
- If your child has been given a detention then they need to attend.
- If you want clarification about a detention please contact the subject teacher or your child's tutor.
- Your child's tutor will be in contact if there are concerns.

# Detentions continued...



Detentions are split into three levels; (Level 1, Level 2 and Level 3) these will be held on three days (Tuesday, Wednesday and Thursday) in a central venue in school following the schedule as below:

<b>Tuesday</b>	<b>Wednesday</b>	<b>Thursday</b>
L1 - 25 minutes	L1 - 25 minutes	L1 - 25 minutes
L2 - 50 minutes	L2 - 50 minutes	L2 - 50 minutes
L3 - 75 minutes	L3 - 75 minutes	L3 - 75 minutes



# Respect and Pride



WE SHOW

**RESPECT**

AND TAKE

**PRIDE** AT EPCS

for others  
for our community  
for ourselves  
for visitors

in our achievements  
in our community  
in ourselves  
in representing our school



## Which means in our learning we will:

- ✦ Take personal responsibility for our own progress and attainment
- ✦ Know our target grades and how much progress we have made towards them
- ✦ Try all activities and tasks with a 'can-do' attitude, remaining open minded to new ideas
- ✦ Ask questions to confirm, test, widen and deepen our knowledge and understanding
- ✦ Present all our work to the best of our ability across all of our subjects
- ✦ Contribute positively to learning in and out of class by reading regularly, developing our writing, using numeracy and taking part in speaking and listening opportunities
- ✦ Support each other in class to learn by participating in opportunities to reflect, give and respond to feedback – using the agreed school strategy of 'Think **Pink** Go **Green**'
- ✦ Let our teachers know if we are having difficulties and be proactive, taking any help offered if for any reason we fall behind
- ✦ Do our homework and use the school's support for homework and revision if we need it
- ✦ Support the school's extra curricular programme by taking part and by supporting others that do
- ✦ Work with cover teachers sensibly so that effective learning can continue and our progress continues
- ✦ Raise concerns or ideas for improvement through the Council and Parliament structure

## Which means around the school site we will:

- ✦ Be polite and respectful of others – not using bad language that puts down others or makes them feel uncomfortable
- ✦ Contribute to our school positively and honestly
- ✦ Wear our uniform correctly and with pride
- ✦ Respect each other's property and take care of our school environment
- ✦ Move around the site in a sensible and safe way, thinking of others' needs
- ✦ Apologise sincerely if we get things wrong and not bear grudges

## Which means in classrooms we will:

- ✦ Be on time to school attending tutor time and lessons promptly
- ✦ In class settle quickly, ready to participate, removing coats and non-school uniform before the lesson starts
- ✦ Have all the equipment needed for the lesson including a pencil case and diary out on the desk and stow bags out of the way of others
- ✦ Sit where we are asked to, remembering that teachers set the class and tutor seating plan based on their plans for learning
- ✦ Follow staff instructions first time without challenge

WE CONTRIBUTE TO AND FOLLOW THE SCHOOL'S RULES AND POLICIES



# School bags

- Rucksacks/satchels are the only bags that are suitable for school
- They should be big enough to take an A4 sized book



Handbags are not acceptable





# Mobile phones



- School policy for Years 7-11 is that students hand their phone to their tutors during Roll Call.
- If you need to contact your child please go through our school reception and we can pass on any message.
- If phones are found on students they will be confiscated and you will have to collect from reception.



# Contact with school



**Tutors**

**Student  
Handbook**

**Email/Website**

# Home Learning



- Students that engage with and complete homework get better examination results.
- Students will be issued regular homework and the expectation is that they complete this.
- We want to support students with Home Learning - We have a Homework club.
- Homework warning slip issued if students fail to hand in their homework- this leads to a second chance to complete
- Homework support sessions.

# Attendance Matters



- At EPCS we strive for 100% attendance but expect a minimum of 96% in line with the national average.
- Our school policy asks that if a student is going to be absent from school that you contact us on the first day of absence before 9am.



# **Date for your Diary**

**Wellbeing Check up - Thursday 24 September  
2020**

Early closure to allow for all Year 7 and Year 8 students / parent(s) / carer(s) to have a face to face or virtual meeting with their tutor.

# QUESTIONS





# First day - Wednesday 2nd September



- Students to arrive in full school uniform.
- It is likely that students will be required to bring a packed lunch in September
- They will be met by their tutors in the playground and will line up before going to tutor time.
- They will spend some time with their tutor group and will be given their timetable and handbook.

# Where do students go on their first day?





# Where do students go on their first day?



# How do you envisage them starting in September?



- We are expecting Year 7 to be in school on Wednesday 2nd September - this week will be focused on inducting students to EPCS.
- There will be some limited testing, in lieu of not having any SATs data.
- We envisage that on Monday 7th September they will follow their timetabled lessons however, we are considering that students will be based in 'bubbles' and located in one area of the school due to the current situation. With the teacher being the one to move about.
- However, this could change based on government guidance. We will update you with a clear plan at the end of August.
- This will be reviewed on a regular basis.



# **Will the children have a chance to visit EPCS before they are due to start in September?**

Current government advice is still to limit the amount of visitors to the school site.

*Though visits to secondary schools for induction will not take place this year, some secondary schools may have capacity to undertake remote induction briefings or other types of sessions for pupils, for example, to meet form tutors, heads of year, or other key staff, or have a tour of the school virtually.*

We are conducting a very small amount of tours for students, who have been identified by primary schools.

There will be an induction opportunity for Year 7s when they start in September.



## **Are students required to have their full PE kit on the first day of school?**

- No, they will not need their PE kit on the first day.
- The only equipment they require is their pencil case.

## **What after school activities are there?**

- We are unsure due to the current situation when we will be in a position to offer after school clubs.
- There is Homework club that runs every day in the library from 3:10 - 4:10.
- Clubs running from September will be published within the first few weeks of the new term.
- Students do not need to register for clubs but can turn up on the designated night.

## **How are tutor groups sorted? Are they by ability?**

- No they are not, they are a mixture of all abilities, from all our different feeder schools. Consideration of student needs and dynamics are also carefully considered as is who would be the most suitable tutor.
- Sorting students into tutor groups is quite a complex task.
- As this year is slightly different we will monitor the tutor allocations and these may be reviewed during the first term.

## **Do students have their lessons in their tutor groups?**

- No, we have two bands in the year group, X and Y. Students are placed in a band and from that they are placed into their classes.
- We are a mixed ability school and classes reflect this.
- We would normally place students in a band based on their SATs results and feedback from the primary schools. Due to the SATS not taking place this year we will complete electronic CATs testing of students during the induction days and that may lead to students moving bands.

## **What are the differences in tutor groups e.g. how is 7D1 different 7D3?**

There is no specific difference. D1/D2/D3 are just codes for each tutor group.

There is no ranking system and they are not organised by ability.

## **When will my child get their timetable?**

This will be issued to them on their first day at EPCS. Their tutor will go through it with them and they will either write or glue it into their student handbook.

## **Will my child be provided with a map of the school?**

Yes, there is a map of the school sent home in the summer in the student transition booklet and they will have a map of the school in their student handbook.

## **What languages do they study?**

Students will study either German or Spanish and this is determined by the Head of Modern Foreign Languages, Miss Lees.

# How can I prepare my child for such a big move?

It is a very big move and a completely different environment to primary school. Some tips to help you prepare for September:

1. Do a timed school run during the school holidays. If your child is walking, cycling, scooting or getting the bus to school then time how long it takes to get from your house to school. That alleviates the stress of guessing what time they need to set off in order to be in school on time
2. Get into a routine of checking your child's timetable with them every night and getting them to pack their bag accordingly.
3. Talk to your child about their worries, what they are looking forward to about secondary school. There are some really good websites that have lots of great videos and tips to aid transition. In particular Be Awesome Go Big and BBC Bitesize are recommended.



**Thank you for listening and we  
look forward to welcoming you  
in September.**

[transition@epschool.org](mailto:transition@epschool.org)